

Residence L'Antica Fattoria



Address: Via Piergolo
Sant'Angelo all'Esca (Avellino)
Tel. (+39) 0827.73766
web site: www.tenutacavalierpepe.it
email: info@tenutacavalierpepe.it
Facebook: Tenuta Cavalier Pepe
Instagram: @Tenuta_cavalier_pepe

Hospitality in the Irpinia vineyards and olive trees



Wake up in the tranquil hills of the Calore Valley at L'Antica Fattoria nestled amongst rows of vines and centuries-old olive trees, in one of the major terroirs of Irpinia viticulture. Located in the heart of the Taurasi DOCG production area, in the municipality of Sant'Angelo all'Esca within the vineyards of the Cavalier Pepe estate, a modern and welcoming winery managed by Milena Pepe.

The accommodation consists of two independent apartments, both bright and airy offering panoramic views across the Irpinia countryside, each equipped with every comfort. If you are looking for a tranquil and relaxing vacation in the heart of the Taurasi region then L'Antica Fattoria is the perfect location. The recently renovated country house, will immerse you in an extraordinary experience of living in the

Irpinia vineyards. Strategically positioned in the heart of the highly revered Irpinia wine region. You will discover one of the premiere areas most suited to the cultivation of Aglianico, Fiano, Coda di Volpe and Falanghina grapes. Within easy walking distance are the Cavalier Pepe estate cellars where you will be guided on a fascinating sensory enological journey through the centuries old vineyards, to the wine-making and bottling rooms and the barrel cellar where you can taste the estate wines. In the immediate vicinity of the estate, perched on a hillside, the winery restaurant will welcome you for lunch or dinner with a tasting menu of typical local products and the traditional Irpinian culinary dishes.



Location

"L'Antica Fattoria" Residence is located 300 meters from the "Tenuta Cavalier Pepe" winery, in a panoramic position on a hill 500 meters above sea level, surrounded by the vineyards and olive groves of the estate.

Services and activities

Open all year. Check-in by 20.00 - check-out by 11.00 Breakfast hours: 7.00 at 10.00

Private parking, Garden, deck chairs, barbecue, swings, gazebo with marble table and wooden chairs. We accept pets. Major credit cards accepted (Visa, MasterCard), Maestro, Pay, Visa, electro, Carta SiTasting of typical local products.

Guided visits to the winery and vineyards of the Estate.

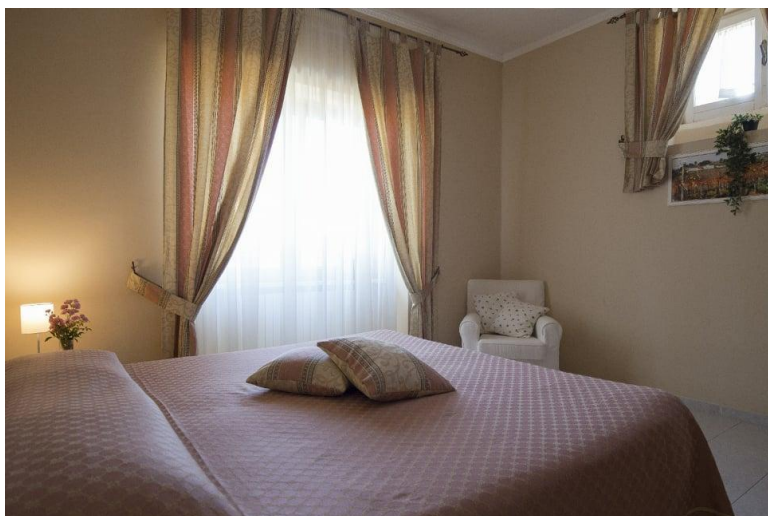
Mountain bike rental

Accommodation

There are 2 independent apartments with a total of 12 beds + 2 camp beds + a cot. The apartments on the ground floor and 1st floor consist of 2 double bedrooms, 1 kitchen, 1 bathroom, 1 lounge below with sofa bed and 1 lounge above with sofa bed and 2 single beds. Rates per night with breakfast included.

Services included

Kitchen at disposal - Heating - TV - Terrace - WIFI



The surroundings: what to see and what to do in Irpinia

Minutes away by foot you can reach the Cavalier Pepe Winery Estate, with 60 hectares of vineyards and olive groves offering tours and wine tastings. Their restaurant, serving local specialties, is open for lunch and dinner in an enchanting setting, offering commanding panoramic views over the valley towards the enchanting hilltop town of Sant'Angelo all'Esca.

Close by is the village of Taurasi: historic center and the Marquis Castle, home to the Regional Enoteca dei Vini d'Irpinia, 4.5 km away.

By car you can reach:

the villages of Sant'Angelo all'Esca (2.5 km), Luogosano (1 km), Fontanarosa (4 km), Lapio (7.5 km), the Archaeological Park of Mirabella Eclano (8 km)

Salerno and the Amalfi Coast 60 km

Naples and Pompeii at 80 km

The islands of Capri and Ischia

The Royal Palace of Caserta and its park

How to reach us

The Antica Fattoria is easily accessible via the Naples-Canosa (A16) highway. Exit at the Grottaminarda toll booth, merge onto the SS.90 towards Fontanarosa and then follow the directions for Sant'Angelo all'Esca (13 km from the toll booth). Alternatively, exit at the Benevento tollbooth, continue towards Foggia on the SS.7 to Calore, from here continue on the SP. 52 to Taurasi towards Sant'Angelo all'Esca, 16 km from the toll booth. Alternatively, exit at Avellino Est, continue on the SS.7 Ofantina towards Montella-Laceno-Lioni, take the SP.ExSS.400 and the link road for San Mango towards Luogosano and then Sant'Angelo all'Esca, 26 km exit.

Geographic coordinates

GMS 40°59'43"N 14°59'33" E

